



# UNIVERSITY OF CONNECTICUT

Fall 2023

Pre-Law Group Advising

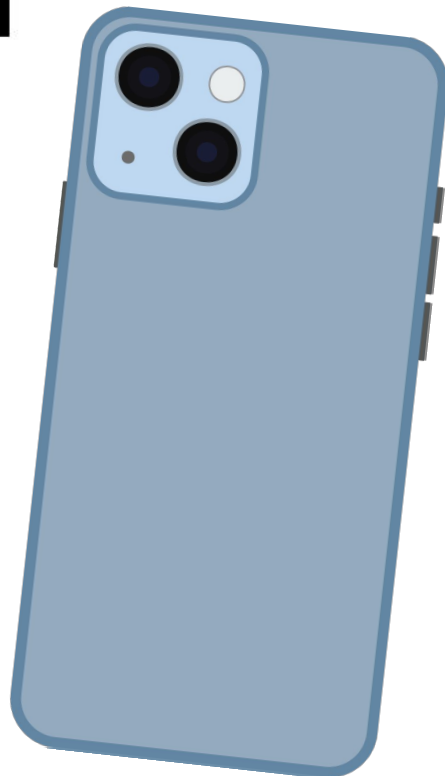


**UConn**

OFFICE OF  
PRE-PROFESSIONAL  
ADVISING

# NEWSLETTER SIGN UP

Just scan and  
we'll add your  
email to our  
mailing list!



# Topics & Goals

## Topics:

1. Get to know us
2. Explore
3. Prepare
4. Apply
5. Key Takeaways
6. Q&A

## Goals:

- ★ Give you a comprehensive understanding of pre-law recommended coursework and law school applications
- ★ Provide information about the importance of cultivating co-curricular experiences
- ★ Connect you to resources so that you can get engaged at UConn and beyond





1.

# GET TO KNOW US

*The PPA Staff and how to connect!*

# Office of Pre-Professional Advising - PreLaw



**Dr. Sarah Scheidel**  
Director



**Chrissy Gray**  
Pre-Professional Advisor



**Makenzie Cossette**  
Pre-Law Student Admin. Asst.



**Sue Ruggiero**  
Program Assistant

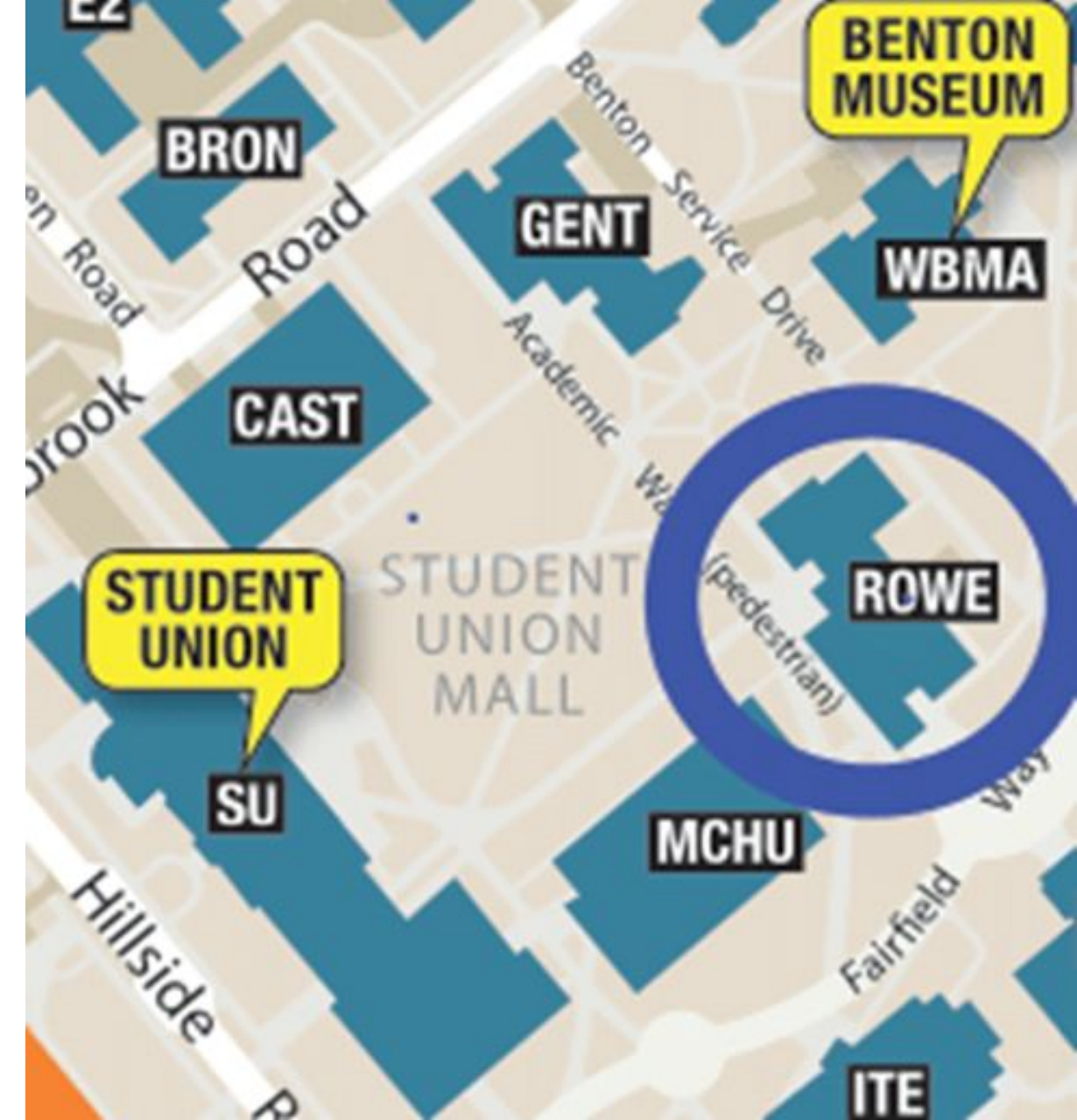


## Where are we?

- ROWE Building, 4th Floor
- Virtual Webex appts or drop-ins

## How can you connect w/us?

- Join our newsletter!
- Website: [prelaw.uconn.edu](http://prelaw.uconn.edu)
- [✉ prelaw@uconn.edu](mailto:prelaw@uconn.edu)
- [📷 uconn\\_prelaw](https://www.instagram.com/uconn_prelaw)
- [Workshops](#), appts., drop-ins, etc...



## How do I make a one-on-one appointment?

- [Nexus](#)

### Drop-in advising (10 minutes or less)

- Mondays from 2pm - 4pm (In-Person; check-in outside of Rowe 403)
- Tuesdays from 11am - 12pm (Virtual via WebEx; [join here](#))
- Wednesdays from 11am - 12pm (Virtual via WebEx; [join here](#))
- Thursdays from 2pm - 4pm (In-Person; check-in outside of Rowe 403)

\*All drop-in appts. should be limited to topics that can be covered in 10 minutes or fewer.\*



2.

# EXPLORE

*Clubs, Organizations, Resources, etc...*

# Clubs + Organizations

- ✦ Develop or discover your passions
- ✦ Engage in community service
- ✦ Improve your teamwork and leadership skills
- ✦ Find an opportunity for networking
- ✦ Have fun!

The UConn Mock Trial Team, UConn Law Society, UConn Empowering Women in Law, the National Black Law Students Association-UConn chapter, and UConn Moot Court (coming soon) are all law-related extracurriculars. You can also find more information at [UConntact](#).





# On-Campus Resources



✦ Strengthen your skills and readiness for law school



✦ Engage with the campus community



✦ Find fulfilling employment and/or research opportunities



✦ <https://career.uconn.edu/>





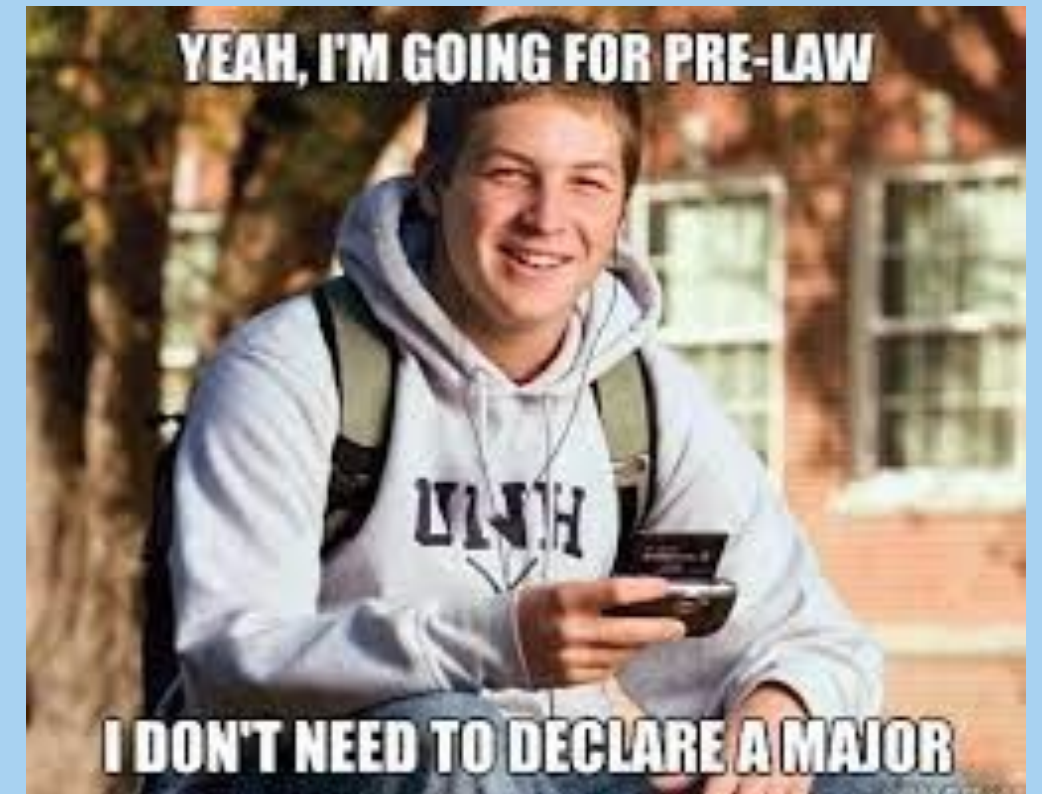
**3.**

**PREPARE**

*Academics, involvement, and more!*

# Choosing your Major

- ✦ There is no correct "pre-law track" - you can major in *anything* as long as you perform well
- ✦ Common majors: Political Science, History, Economics, Philosophy, Psychology, English
- ✦ You **CAN** have a **STEM** major as a pre-law student! (ex. engineering majors can go on to be patent lawyers)



# Pre-Law Course Recommendations

## Mathematics / Statistics

MATH 1020Q: Problem Solving

MATH 1070Q: Math for Business & Economics

STAT 1000Q: Introduction to Statistics / STAT 1100Q: Elementary Concepts in Statistics

## Philosophy / Sociology

PHIL 1102: Philosophy and Logic

PHIL 221Q: Symbolic Logic

PHIL 2215: Ethics

PHIL 2217: Social and Political Philosophy

SOCI 3823: The Sociology of Law - Global and Comparative Perspectives

## English (any writing courses are helpful)

ENGL 3601: The English Language

ENGL 3633W: The Rhetoric of Political Discourse in Literature and Society

## Economics

ECON 1200, 1201 and 1202: Microeconomics & Macroeconomics

ECON 1108: Game Theory

## Communication

COMM 1100: Public Speaking

\*Any law-related courses from the History, Political Science, Sociology, Anthropology, etc.



# Research/independent scholarship

✨ Research is not a requirement, but it is great experience and it can make you a more competitive law school applicant

✨ Research Opportunities:

- Holster Scholars Program
- Bennett RA Program
- BOLD Women's Leadership Network
- IDEA Grant, SHARE Grant, CHANGE Grant
- SURF Awards
- Work-Study Research Assistant Program

✨ Visit the OUR website to learn more!



**BOLD**  
WOMEN'S LEADERSHIP NETWORK  
COURAGE. AUTHENTICITY. VISION.



EXPLORE  
CREATE  
DISCOVER

**UCONN**  
**OUR**





4.

# APPLY

Holistic admissions  
Application Overview  
Support

# Holistic Admissions

- ✦ The majority of law schools take a holistic approach to admissions
- ✦ "All files are holistically reviewed and each part of each file is taken into consideration."
  - UConn Law School
- ✦ Applications are evaluated as a whole - admissions decisions are made based on multiple factors: recommendations, GPA, LSAT, personal statements, additional essays, etc.



# Application Overview



## ✦ Timeline

Applicants formally begin applying during the summer usually **one year** prior to when they plan to matriculate to law school. Most application deadlines are in Feb/March.

## ✦ Rolling Admissions

Committees evaluate applications as they are received. For best chances of admission & financial aid - **APPLY EARLY.**



✦ Aim for **October/November**, but only if application is truly complete. Don't submit a rushed application to have it in as early as possible, you have to consider what is best for you as an individual applicant.

## ✦ Results

Some law schools will inform applicants of their admissions status in just a few weeks, others will take months. Be patient after submitting applications!





# Application Overview - LSAC

## Main Application Components

Note - You can create an LSAC account any time (even if you're not applying yet)

### ★ Completed application

- LSAC's Credential Assembly Service (CAS) simplifies the law school application process for both candidates and law schools. With CAS, your transcripts, letters of recommendation, and any other documents required for each of your law school applications only need to be sent one time to LSAC.
- CAS subscription = \$200 and is good for 5 years
- Each school you apply to = \$45 + their application fee (if applicable)
- Fee waivers! Learn more about [LSAC's](#) or specific schools!

### ★ GPA

- order transcript from the registrar; sent directly to LSAC through CAS
- LSAC converts your GPA to their scale, this GPA is used for apps.

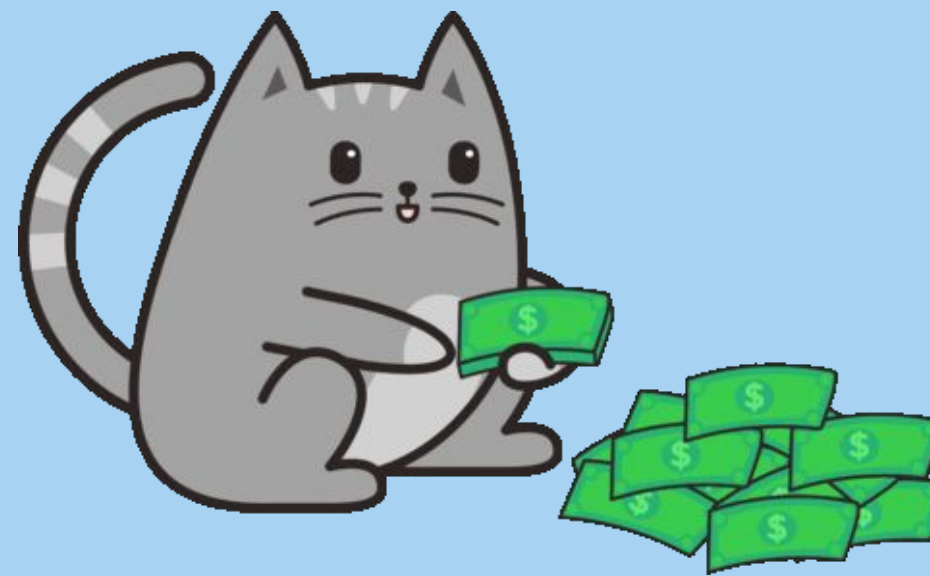
### ★ LSAT score

### ★ Letters of recommendation

### ★ Your resume

### ★ Possibly, addenda

### ★ Your personal statement



# Application Components - LSAT

- ✦ How many times can I take the LSAT?
  - Can take a maximum of 3 times in a single testing year
  - You are limited to 5 exams in 5 years
  - You have a lifetime limit of 7 exams in your life
  - Most applicants take the LSAT twice
    - May & June are popular dates since that gives time to retake in the fall if needed

✦ All of your LSAT scores are seen by law schools, unless you purchase the **LSAT Preview for \$45** which allows you to see your score before it is reported

✦ LSAT Exam Overview:

- Logical Reasoning
- Analytical Reasoning (Logic Games)
- Reading Comprehension



# Application Components - LORs

✦ Most law schools will require at least 3 Letters of Recommendation:

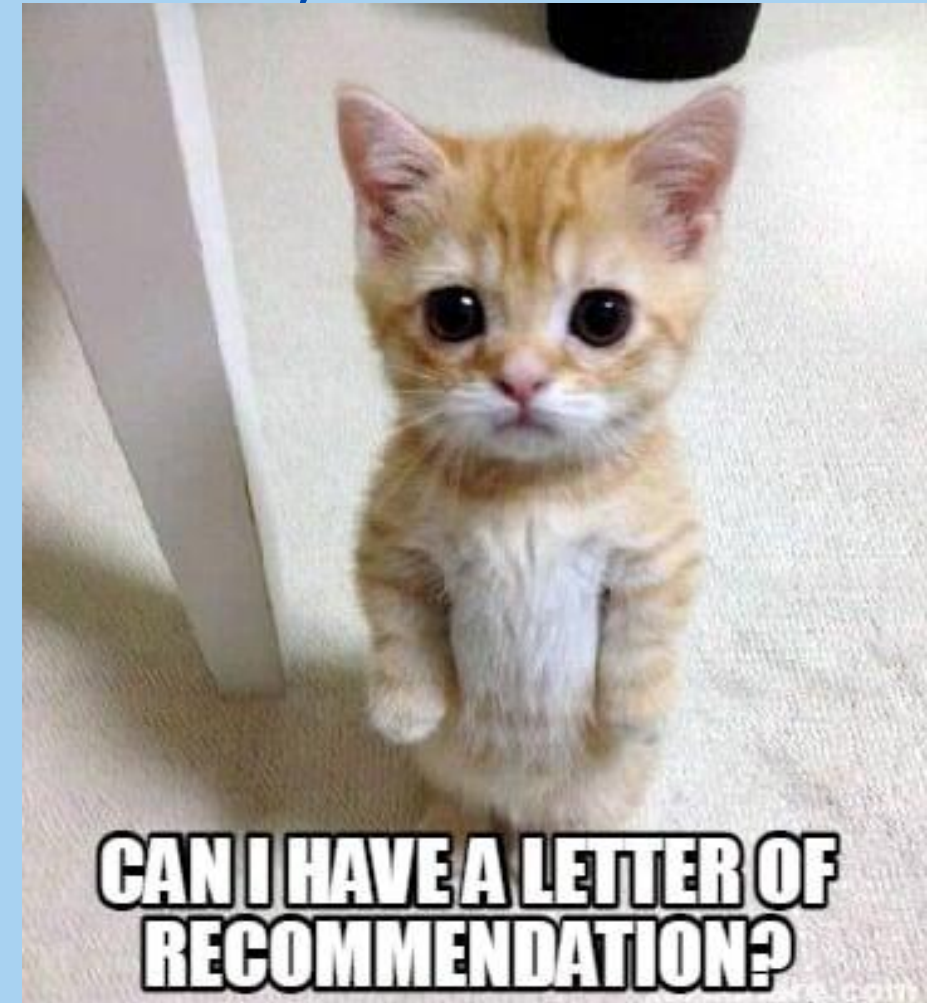
- 2 from professors
- 1 from someone outside your coursework or outside of the university

✦ The letters from professors should be from someone who:

- knows you well
- understands your strengths as a student
- had you in class, researched with, or had some academic experience with
- could be from any course (doesn't have to be law-related)

✦ The letter(s) from someone outside of the university:

- NOT a family member
- Boss at a job, internship supervisor, coordinator of volunteer program
- Make sure the person writing the recommendation knows you well.
- Don't submit a letter from a big name who doesn't truly know you



# Application Components - Addenda

- ✦ Addendum - An optional part of an application where applicants can explain anything that might not be clear.
- ✦ Examples:
  - Explaining a gap in a resume
  - Explaining grades that are inconsistent with the rest of transcript
  - Explaining a character and fitness issues
- ✦ Applicants **MUST** explain any run-ins with the law
  - Even speeding tickets need to be reported to law schools (not parking tickets)
  - It is better to over-compensate for legal issues by reporting every discrepancy, regardless of how minor they may seem

# Application Components - Personal Statement

✦ Typically you can re-use the same personal statement for most applications, however, some schools may have specific questions they want you to address, therefore it is common to have to write multiple versions.

✦ Address questions like:

- Who are you?
- What are your interests?
- Why do you want to go to law school?
- What do you hope to do with a law degree?

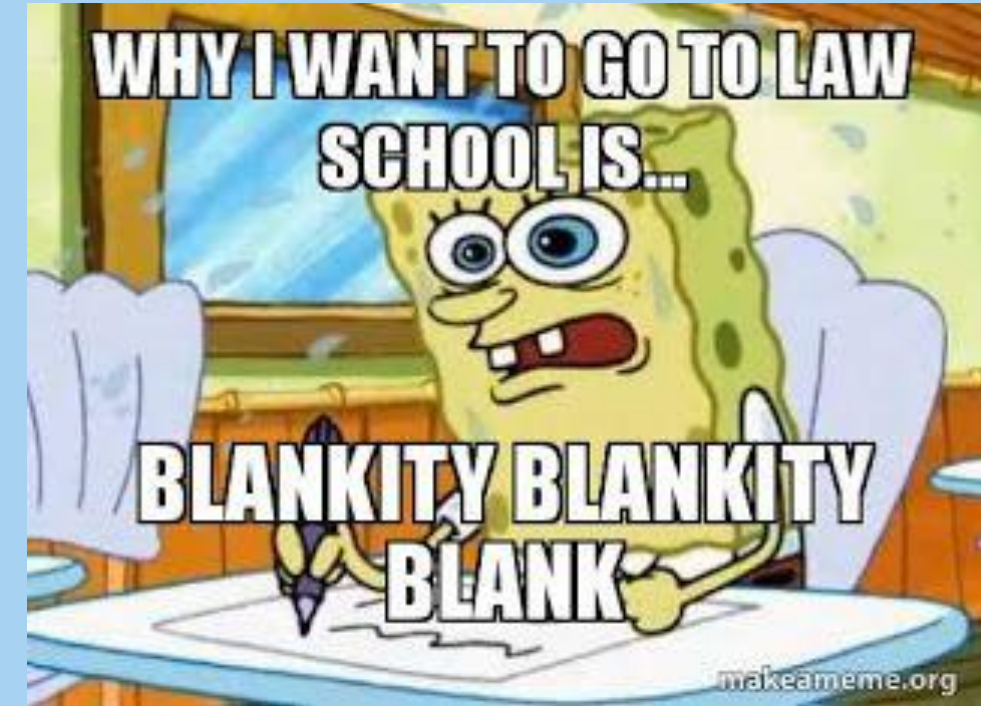


✦ Your personal statement should be genuine and sound like you. Do not use it as an opportunity to use complicated legal jargon and show off your vocabulary.

✦ Editing and revising is **EXTREMELY** important! Many people should read this.

# Personal Statement - Resources

- ✦ Writing Center
- ✦ Center for Career Development
- ✦ Faculty mentors
- ✦ Internship or work supervisors, especially if they are in the field
- ✦ Family or friends who can speak to your authenticity coming through



# Gap/Growth Years

- ✦ The average age of a law student is **25**, there is no rush to go straight to law school after completing undergrad
- ✦ Professional experience is highly valued by many law schools & can make your application much more competitive
- ✦ Everyone's journey to law school looks different, there is no "correct" way to navigate this process
- ✦ We recommend that students who intend to take growth years should ask for recommendations from professors before graduating, and stay in contact. It is often difficult for professors to write students good letters years later: professors may retire, go on sabbatical, not remember you, etc.

# Key Takeaways




- ✦ Pursue your passions during undergrad - major in what interests you!
- ✦ Explore different academic opportunities and RESOURCES (like us 😊) to get the most out of your undergraduate education
- ✦ Start planning early to ensure a smooth application process
- ✦ Everyone's journey to law school is different, there is no "correct" way to navigate the process



# CONNECT WITH US!

Visit our website: [prelaw.uconn.edu](http://prelaw.uconn.edu)  
if you want more information

Email us at [prelaw@uconn.edu](mailto:prelaw@uconn.edu)  
at any time with questions

Follow us on Instagram  
 @uconn\_prelaw

**UCONN**

OFFICE OF  
PRE-PROFESSIONAL  
ADVISING